

Health and Social Care Integration Progress in Fife

**Joint Employability and Third Sector
Health and Social Care Forum
11th February 2015**

*Heather Ford and Fiona Mackenzie
Health and Social Care Integration
Change Managers*

Objectives

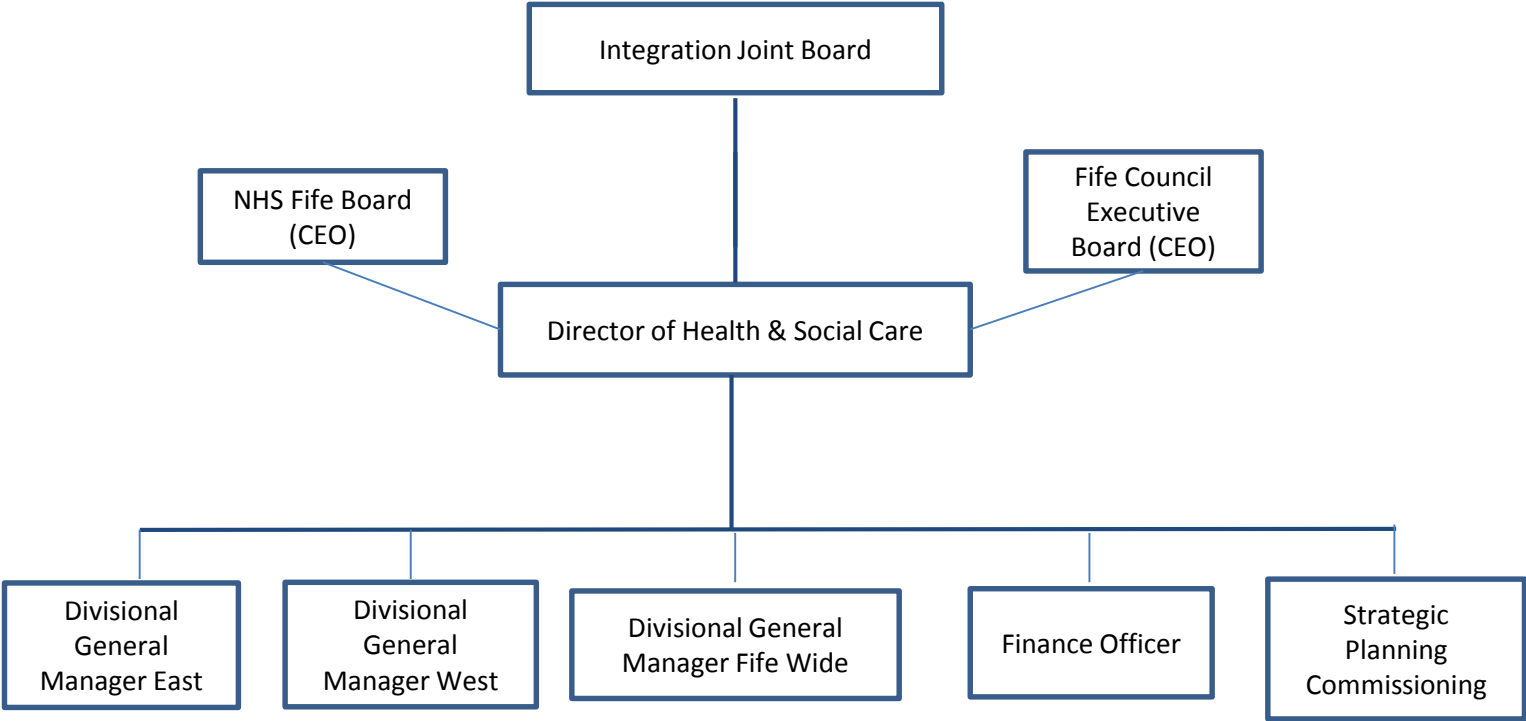
- Update on the legislative background
- Share the timeline of key activities and the emerging structures
- Links to other policy areas including Self Directed Support and self management



What has happened so far?

- The Shadow Integrated Health and Social Care Partnership Board was established in June 2013
- Sandy Riddell, Director of Health and Social Care appointed - 1st September 2014.
- A full work plan to progress key priorities - the development of the Integration Scheme and Strategic Plan.

Health & Social Care Integration



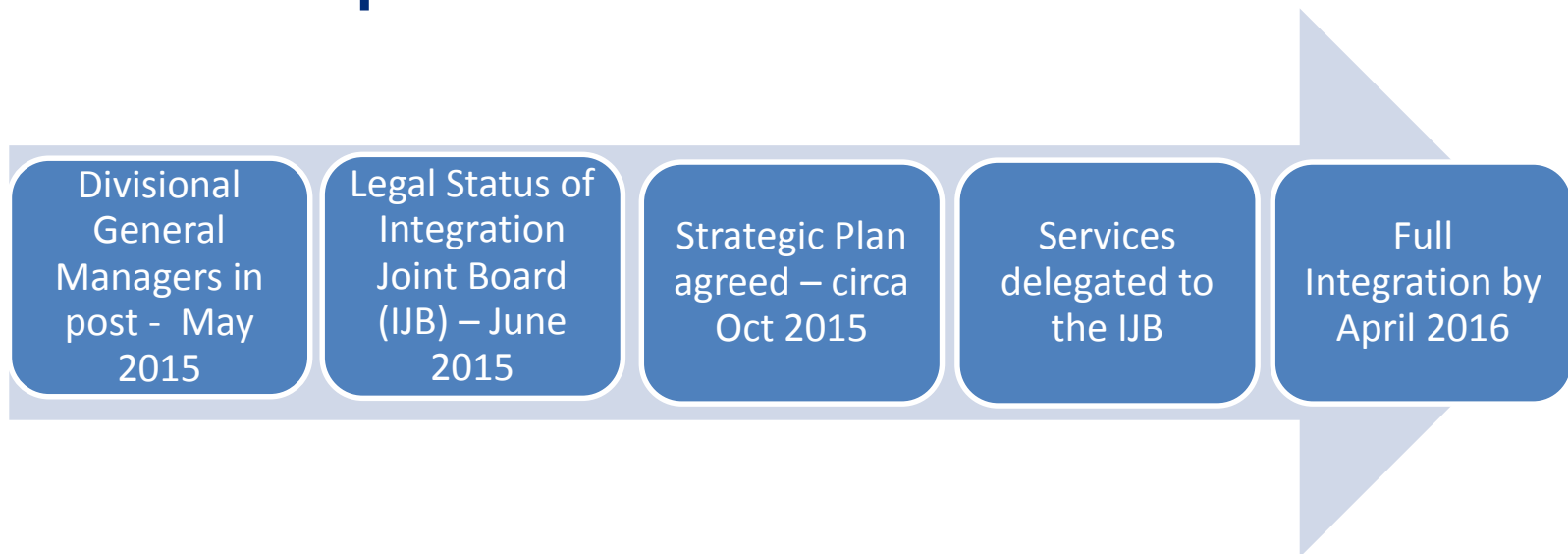
Legislative Context

The Public Bodies (Joint Working)(Scotland) Act 2014.

- All the required Regulations in relation to the Act are now in place.
- The consultation on localities is complete.
- The Integration Scheme consultation is complete – to be submitted by 1st April 2015. ***Body Corporate Model***
- The Integration Joint Board will become a Legal entity after these are approved by Parliament.



Timetable - following submission of the Integration Scheme 1st April 2015



Integration Joint Board

- Will move from Shadow status to become a legal entity around June 2015, and replace the Community Health Partnerships (CHP's) and the Older People and Adults, Social Work Departments.
- Membership of the Board will have representatives from NHS Fife Board and Fife Council as well as carer, service user, third and independent sector members.



Functions that must be delegated by Councils

- Social work services for adult and older people
- Services and support for adult with physical disabilities, learning disabilities
- Mental health
- Housing support
- Housing adaptations
- Carers support
- Community care assessment teams
- Support services
- Care home services
- Day services
- OT
- Re-ablement, telecare
- Drugs and Alcohol services



Functions that must be delegated by Health Services

- Accident and Emergency
- Unplanned inpatients
- Care of Older people
- District Nursing
- Health visiting
- Clinical Psychology
- Mental Health
- Learning disabilities
- Addictions services
- AHPs
- GP Out of Hours
- General medical Services

Who are the partners?

- The legal agreement (Integration Scheme) is between the NHS and Fife Council
- The Partners are – Third Sector, Independent Sector as well as the NHS and Council
- The communities that we serve are also considered key partners

National Health and Wellbeing Outcomes

- 9 outcomes on which the partnership will be measured
- Key themes are:
 - Health, well being and quality of life
 - Independence at home
 - Reducing inequalities and carer support
 - Positive experience and Safe from harm
 - Efficient and effective
 - Workforce are engaged and supported to improve services

The Integration planning principles

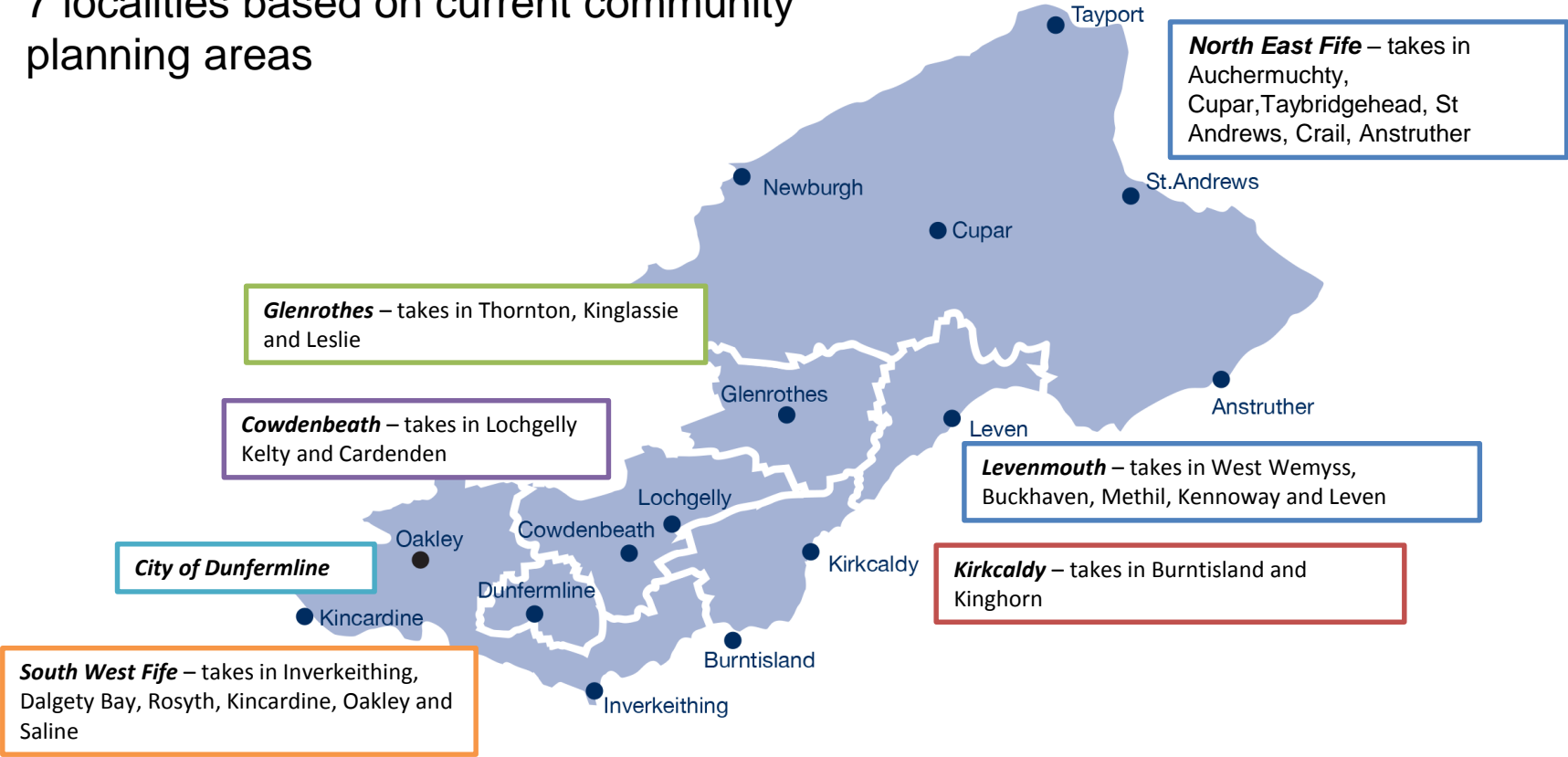
- Is integrated from point of view of recipients
- Takes account of the differing needs
- Takes account of particular needs in different areas
- Planned and led locally – community and professionals together
- Anticipates needs and prevents them arising
- Best use of resources

Localities and Planning

- The legislation requires us to divide the partnership area in “localities”, in terms of planning.
- Why? -To make sure that communities and community planning are reflected in the Integration plans.
- The Shadow Board confirmed that the seven locality planning areas will be used in terms of Strategic planning

Health & Social Care Integration

7 localities based on current community planning areas



Strategic Plan

- In process of being developed and covers all services in scope.
- Strategic Planning Group has wide representation.
- Full engagement and consultation plan is being developed.
- Anticipated consultation period May – August 2015.
- Approval by Integrated Joint Board in Autumn 2015.
- When the Strategic Plan is approved, services/ functions can then be devolved to the partnership.



Vision: Self-Directed Support (SDS) and Health and Social Care Integration

- The quality of life of people who require care and support is improved through increased choice and control over the services they receive.

“putting people at the heart”

- Accessible, seamless, quality services, personalised and responsive to the changing needs of individuals, designed with and for the people of Fife.



SDS: Health & Social Care Integration

- Personal Outcomes - What matters to you?
- Community assets
- Choice and Control
- Services working together
- Shared Responsibility
 - = Supporting people to achieve *their* outcomes

Self-directed Support

- Assessment and Eligibility
- Outcomes and support planning
- Four options
 - 1 Direct Payment
 - 2 Individual Service Budget
 - 3 Local Authority
 - A mix of 1,2 & 3
- Review



SDS in Fife – linked to the development of Integrated Models on many levels

- Phased implementation (All new referrals from April 2015)
- Training across the partnership and linked to personal outcomes approach in NHS.
- Community Asset Mapping

Self management

- Anticipatory and prevention approaches are central to integration.
- Primary Care at centre of communities.
- Community Planning partners more closely aligned to wider integration.



Questions and Discussion.